

MONTHLY MEMBERSHIP PROGRESS REPORT

District 12 L

Results as of: 5/31/2024

GMT:

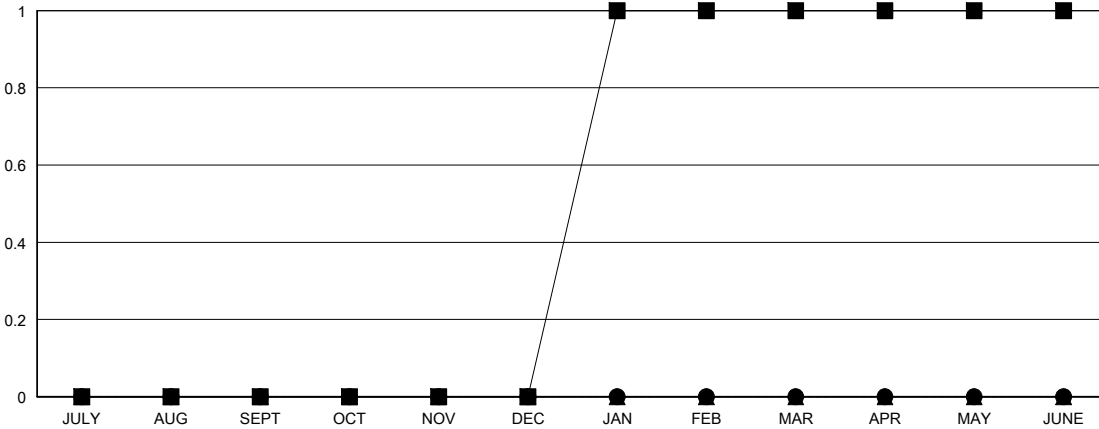
LOCATION TENNESSEE

GMT CA

| Clubs | | | |
|-----------------------|---------------|-----------|---------------|
| RESULTS FOR 2023-2024 | | | |
| QUARTER | NEW CLUB GOAL | NEW CLUBS | DROPPED CLUBS |
| JULY/AUG/SEPT | 0 | 0 | 1 |
| OCT/NOV/DEC | 0 | 0 | 1 |
| JAN/FEB/MAR | 1 | 0 | 0 |
| APR/MAY/JUNE | 0 | 0 | 0 |

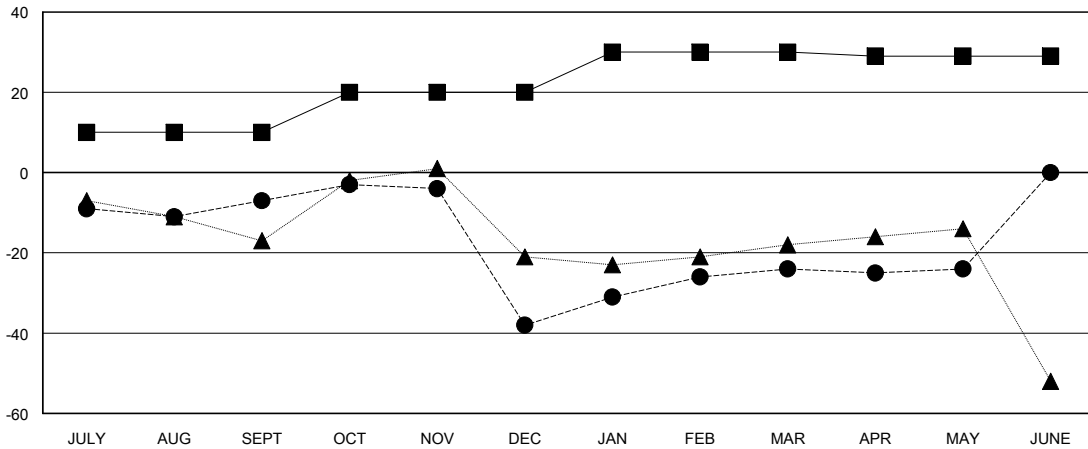
| Members | | | |
|-----------------------|------------------------|----------------------|----------------------------------------------|
| RESULTS FOR 2023-2024 | | | |
| QUARTER | MEMBER GROWTH NET GOAL | MEMBER GROWTH ACTUAL | DROPPED MEMBERS ACTUAL (including transfers) |
| JULY/AUG/SEPT | 10 | 18 | 23 |
| OCT/NOV/DEC | 10 | 18 | 45 |
| JAN/FEB/MAR | 10 | 21 | 6 |
| APR/MAY/JUNE | -1 | 7 | 6 |

GOALS AND ACTUAL NEW CLUBS CUMULATIVE



- - CURRENT YEAR GOALS FOR NEW CLUBS
- - CURRENT YEAR ACTUAL NEW CLUBS
- ▲ - LAST YEAR ACTUAL NEW CLUBS

GOALS AND ACTUAL MEMBERS CUMULATIVE



- - MEMBER GROWTH NET GOAL
- - MEMBER GROWTH ACTUAL
- ▲ - LAST YEAR MEMBERSHIP ACTUAL

| | | |
|-----------------------------------------------------------------------------------------|-----------------------------------------------------------|------------------------------------------------------------------------|
| DROPPED CLUBS: 2 | 21 CLUBS OF 32 ADDED 1 OR MORE NEW MEMBERS | GENDER DISTRIBUTION MALE 405 (65.96%) FEMALE 208 (33.88%) |
| DROPPED MEMBERS DECEASED 8 CLUB CANCELLED 6 OTHER 66 TOTAL 80 | CLICK HERE FOR CUMULATIVE MEMBERSHIP DATA | TOTAL FAMILY UNIT MEMBERS 70 FAMILY MEMBERS PAYING HALF DUES 36 |